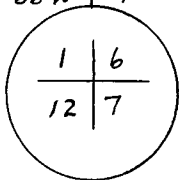


CERTIFIED LAND CORNER RECORDATION

T-14-N
R-66-W | R-65-W

DESCRIPTION OF CORNER EVIDENCE FOUND, AND ORIGINAL RECORD (If known)

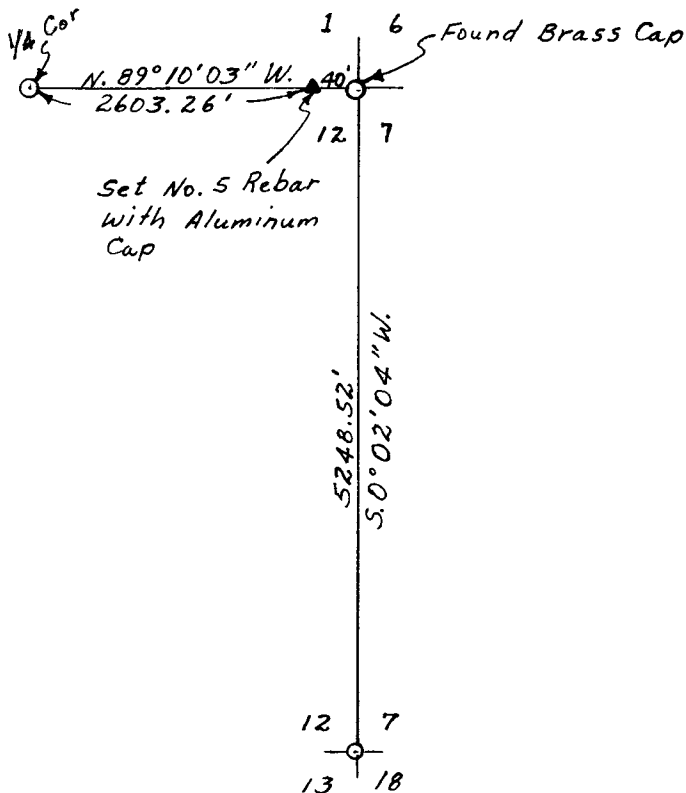


Found Brass Cap containing markings indicating that it was intended to be the Sec. Corner monument. The location, being compatible with established property lines and no other evidence found, was accepted as the corner.

DESCRIPTION OF MONUMENT AND ACCESSORIES ESTABLISHED TO PERPETUATE THE ORIGINAL LOCATION OF THIS CORNER:

Set a No. 5 Rebar with Aluminum Cap 40' west and on line.

SKETCH, WITH COURSE AND DISTANCE TO ADJACENT CORNER IF DETERMINED IN THIS SURVEY. (May Sketch or Paste Reproduction on Reverse Side.)



I, Edward C. Fry certify that I have carefully performed ~~or reviewed~~ the work done on the diagrammed corner as reported on this recordation form and approve the same.

Edward C. Fry
Signature of Surveyor

P. E. L. S. 662
Registration No.

STATE OF WYOMING,
Office of Clerk and Recorder,
County of Laramie

576602

This "corner record" was filed for record on the 30 day of April, 1980, was noted on the cross-index plat and is assigned page No. _____, in book No. _____.

Janet C. Whithead
County Official

Cross Index No.	T. _____	R. _____	Mer.
	<u>625</u>	T. <u>14</u>	R. <u>66</u> Mer.
		T. _____	R. _____ Mer.
	<u>61</u>	T. <u>14</u>	R. <u>65</u> Mer.
		T. _____	R. _____ Mer.
		T. _____	R. _____ Mer.
		T. _____	R. _____ Mer.